



# Ford Field Task Force

06/07/2021

# Ford Field Task Force

## Family and Community Fun

Ford Field is the park for community and family fun in the city!



# Ford Field Task Force

## **Presentation Agenda**

Programming

Krista Siefert

Design

Rick Ambler

NHS Engagement

John Arrowsmith

Implementation

John Carter

# Ford Field Task Force

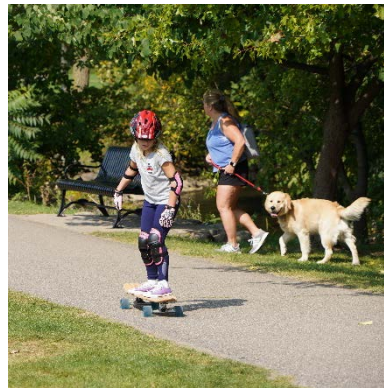
## Programming

Krista Siefert



# Ford Field Task Force

## Ford Field – Where Northville Connects



# Ford Field Task Force

## Potential Programming at Ford Field

Music Festival

Large Scale Games

Movie Nights

Fitness Showcase

Food Truck Event

Spelling Bee

MSU Extension Programs

Park Clean Up

STEM in the Park

Theatre in the Park

Children's Art Fair

High School Battle of the Bands

Art Installations

# Ford Field Task Force

## Design

Rick Ambler

# Ford Field Task Force

## Park Design Brainstorming

New Stairs      New Playscape      Pavilion  
Ice Skating Rink      Reflection Pond  
More Lighting      Amphitheater  
Clean Hillside      New Seating      Bathrooms  
Picnic Tables      City Entrance      Landscaping  
Art Wall      Statue of Bob Seger      New Fence  
Entrance Plaza      New Fence      Bridges  
Serenity Garden      Splash Pad



# Ford Field Task Force

## **Park Design Priorities**

### **Priority 1 – correlates to Master Plan**

Playscape

Bathrooms and Pavilion

City Entrance and Plaza

City Entrance Stairs

City Sidewalk, Fence and Hillside

Ford Field East

### **Priority 2 – improvements for greater park use**

Landscaping & Gardens

Interactive Splash Pad

Lighting, Seating and Tables

Riverwalk Bridge to Main St. – Ford Field East

# Ford Field Task Force

## Parks & Recreation – 5 Year Master Plan

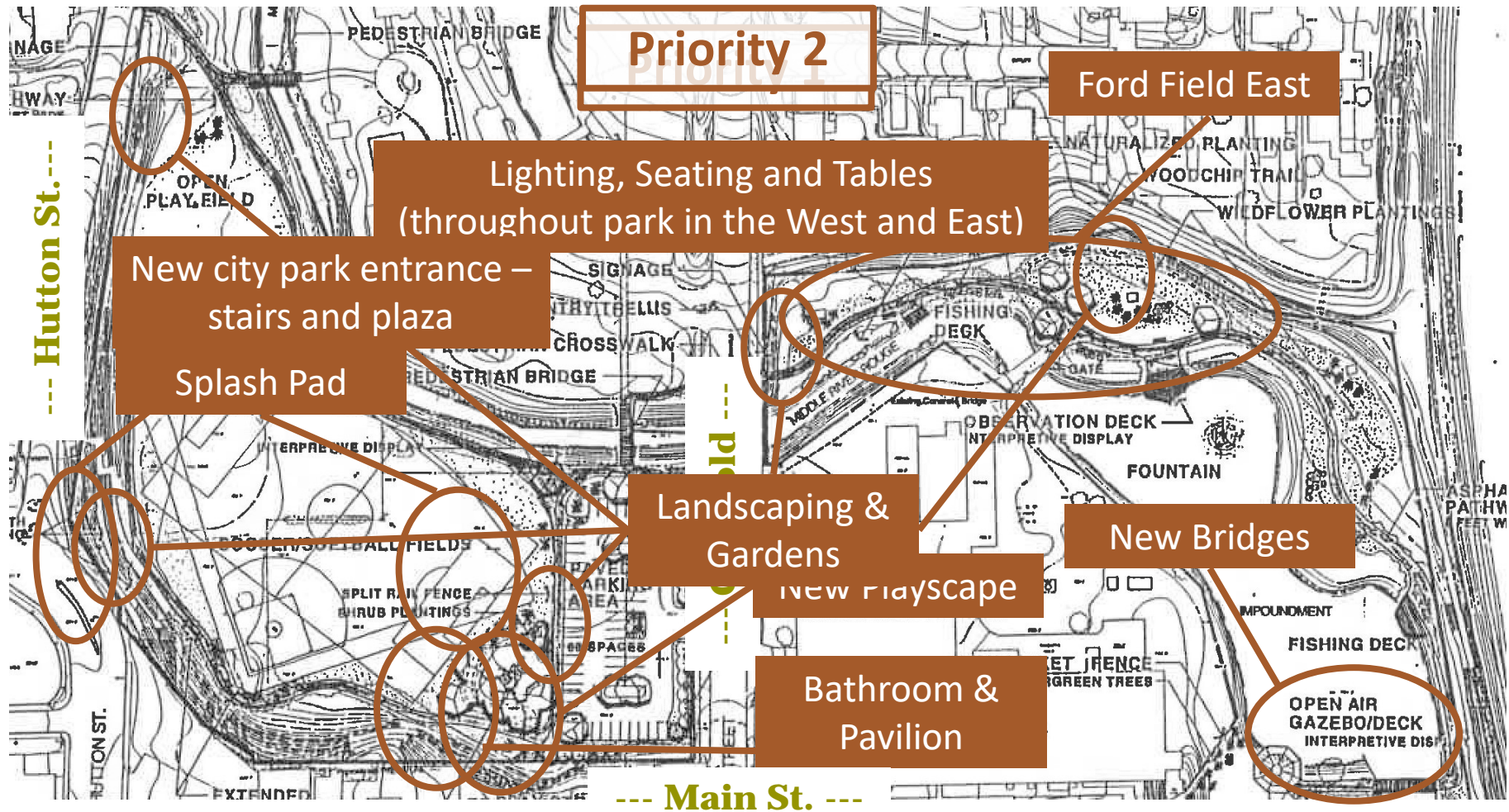
The current Northville Parks & Recreation Master Plan includes a Five-Year Capital Improvement Plan across all parks and facilities. The following items are specific to Ford Field park and approved by City Council in 2019.

Year	Facility/Improvement	Estimated Cost	Funding Sources
<b>Year 1: 2019</b>			
<b>Year 2: 2020</b>	<b>Replace Fort Griswold at Ford Field:</b> Replace 20+ year old wooden play structure w new metal & plastic structure that meets current safety standards.	\$250,000	City Capital Improvements
<b>Year 3: 2021</b>	<b>New Picnic Pavilion at Ford Field:</b> No shelter currently. Used for picnics gatherings, events, etc.	\$50,000	City Capital Improvements
<b>Year 4: 2022</b>	<b>New Restrooms at Ford Field:</b> Currently use port-a-lets.	\$120,000	City Capital Improvements
<b>Year 5: 2023</b>	<b>Replace Backstop &amp; Sideline Fencing at Ford Field</b>	\$40,000	City Capital Improvements
	<b>Replace Light Fixtures on Ball Field at Ford Field</b>	\$25,000	City Capital Improvements
<b>Year 6: 2024</b>	<b>Access Ramp to Ford Field:</b> Replace wooden stairs leading from downtown to Ford Field.	\$100,000	City Capital Improvements, DDA



# Ford Field Task Force

## Ford Field Park (West & East)



# Ford Field Task Force

Priority 1

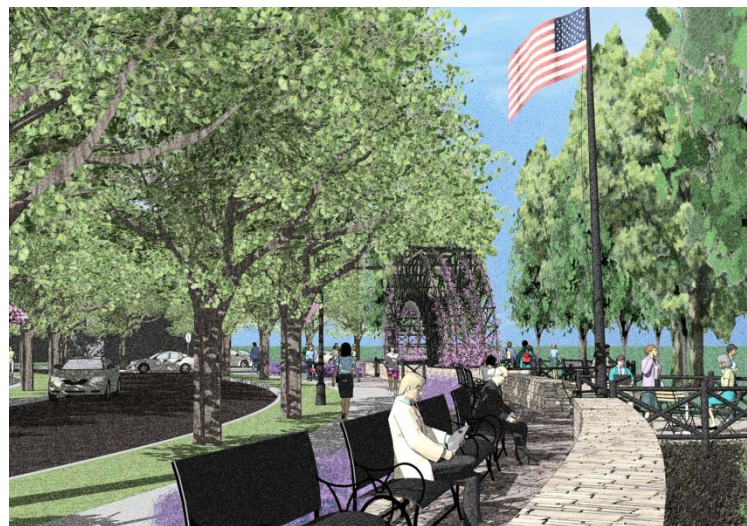
## City Entrance & Plaza

### Location

- Near intersection of Dunlap and Hutton streets
- Potentially align with current walkway from parking lot

### Description

- Inviting and welcoming
- Better connectivity to bring people from the city and Main St. to the park
- Provides visibility to community and visitors
- ADA access currently available at Griswold & Hutton St. North entr.





# Ford Field Task Force

Priority 1

## City Entrance Stairs

### Location

- Coordinated with new entrance
- Closer to city and south of current steps

### Description

- Build new stairs and platforms with seating for transition from new entrance to field
- Material and construction should consider durability and safety
- Aesthetically appealing
- Accessible and usable during all seasons



# Ford Field Task Force

Priority 1

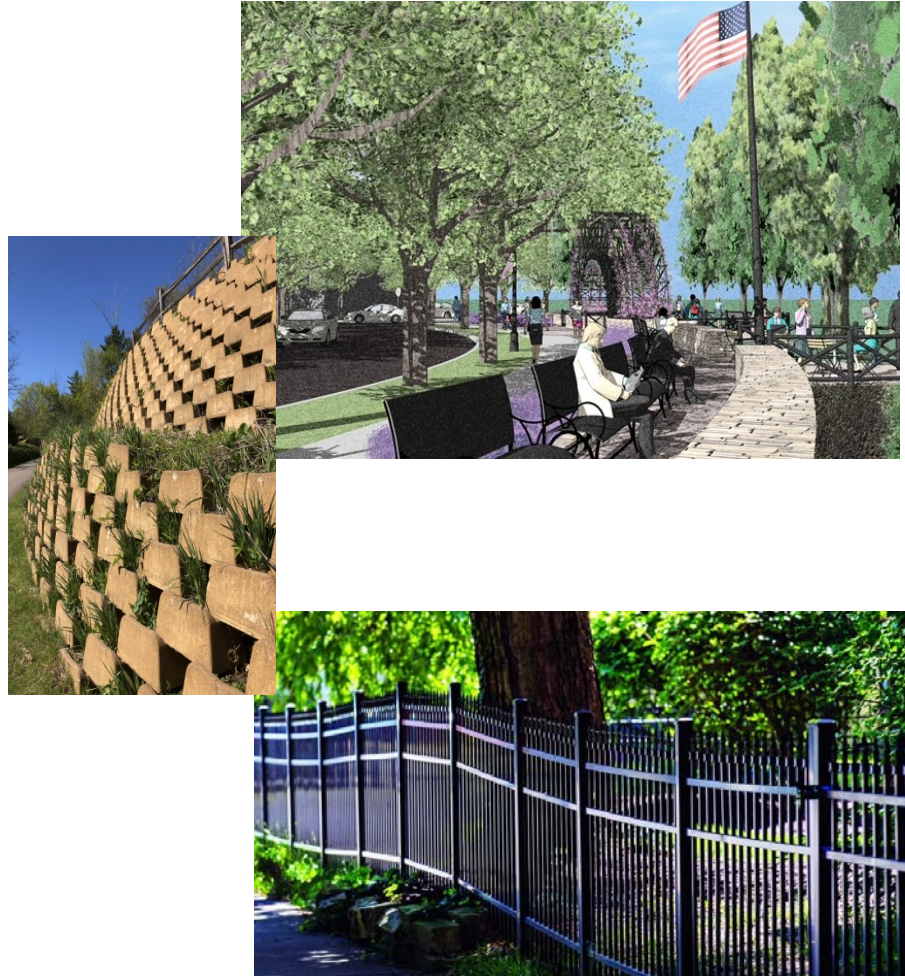
## **City Entrance Sidewalk, Fence and Hillside**

### **Location**

- Along park from Dunlap St. entrance and north along Hutton St.

### **Description**

- Replace fence along Dunlap and Hutton St.
- Creates an extension from new city park entrance
- Provides walkability for visitors and neighborhoods
- Attractive view of the park



# Ford Field Task Force

Priority 1

## Playscape

### Location

- Same as currently located

### Description

- Heavily used park feature
- Strong community connection





# Ford Field Task Force

Priority 1

## Playscape

- Popular attraction
- Ages 2-5 & 5-12
- Universally accessible





# Ford Field Task Force

Priority 1

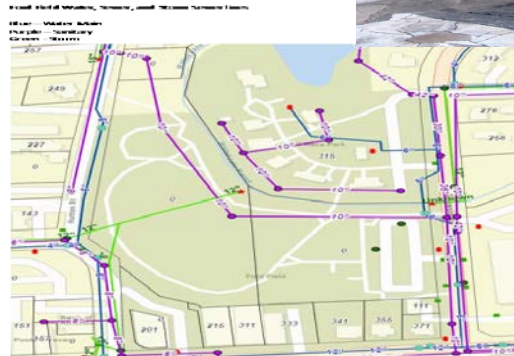
## Bathroom & Pavilion

### Location

- Near the playscape

### Description

- Park enhancement that encourages park usage
- Modern convenience
- Pavilion rental potential for families/groups
- Water and sewer connections are available



# Ford Field Task Force

Priority 1

## Ford Field East

### Location

- City land east of Griswold St. and northeast of Water Wheel Centre

### Description

- Create walking path from Griswold along north side of lake
- Add benches and picnic tables
- Walking path will encourage use of park land and become part of the future Riverwalk





# Ford Field Task Force

Priority 2

## Landscaping

### Locations

- Around new playscape – Children's Garden
- Near Spinning Rock
- At Entrances:  
Hutton/Dunlap/Griswold/Ford Field East

### Description

- Could be community-tended garden
- Pollinator-friendly plants with minimal upkeep, some of which could be donated by community members



# Ford Field Task Force

Priority 2

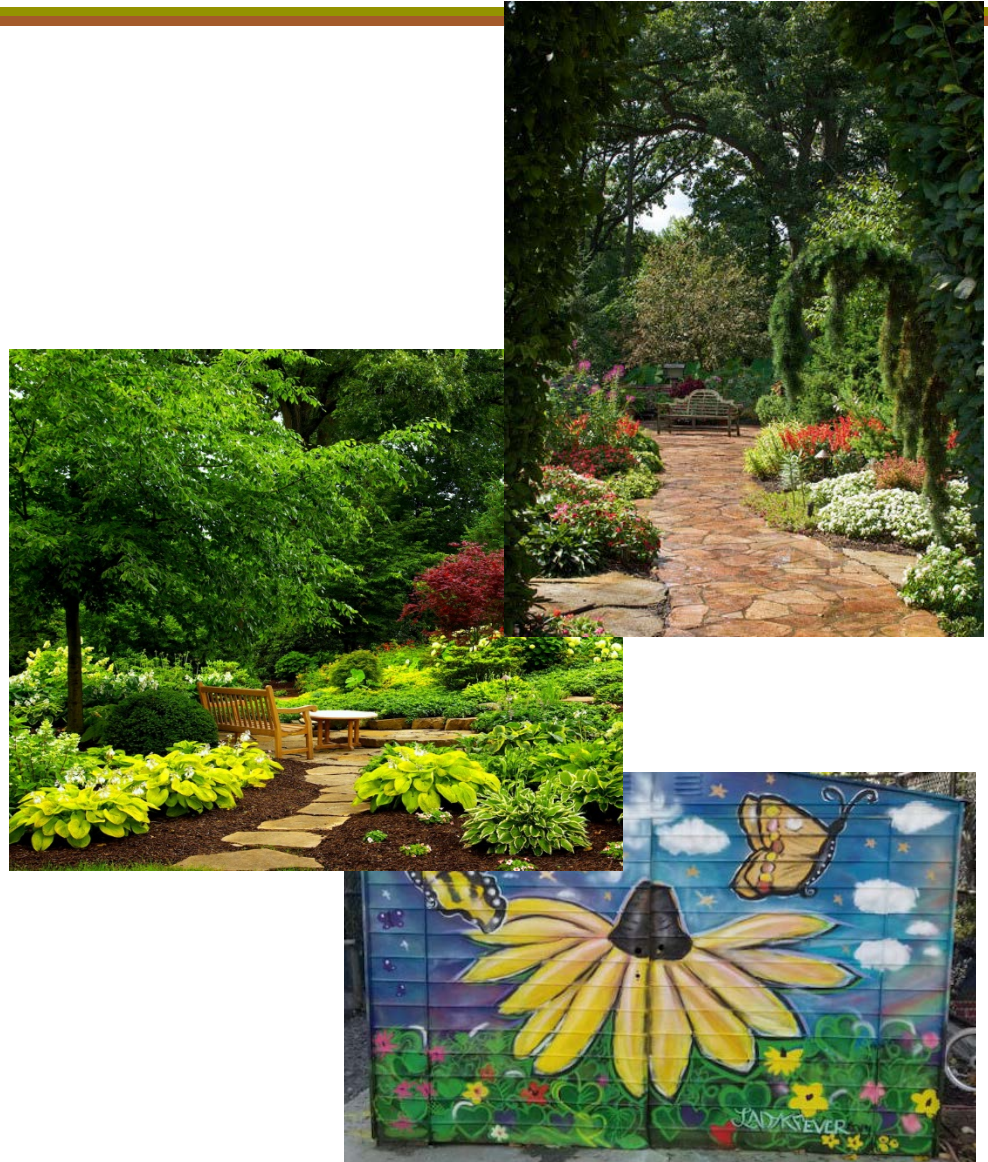
## Serenity Art Garden

### Location

- Near Spinning Rock, next to the river and Ford Field East

### Description

- Provides a tranquil environment to relax and enjoy the natural beauty of the river & park.
- Features varied flowers, shrubs and trees in an “outdoor room” configuration
- Benches for reading, chatting with friends, eating lunch
- Dedicated area for rotating art installations, in collaboration with the Art House and local schools





# Ford Field Task Force

Priority 2

## Interactive Splash Pad

### Location

- Near playscape

### Description

- Inviting area for kids to play
- Ground sprays, bubblers and puddle areas



# Ford Field Task Force

Priority 2

## Lighting, Seating & Tables



- Existing benches
- Proposed benches
- Existing lighting
- Proposed lighting



# Ford Field Task Force

## **Riverwalk Bridge**

### **Location**

- One or two bridges at Ford Field East to Main Street

### **Description**

- Connects to proposed River Walk south of Main St.
- Opens better use of Ford Field East
- Provides a better connection to town businesses



# Ford Field Task Force

## NHS Engagement

John Arrowsmith

# Ford Field Task Force

## NHS Design Class Project

The Task Force engaged with NHS and developed a Ford Field project for their Civil Engineering and Architecture class. Final presentations were made in late May and concepts will be considered for future park design.

### Problem Statement

We needed to design a modern renovation to Ford Field Park that also adheres to the following design criteria:

- Follow all applicable codes and local regulations
- Use Low Impact Development (LID) techniques
- Utilize the existing park layout when possible
- Design a new entrance and stairs
- Create a new children's playscape
- Include public restroom facilities
- Create some kind of pedestrian riverwalk to connect Ford Field Park to Ford Field East
- Included at least one unique feature in the park to encourage community gatherings

### Opportunities and Challenges

- Opportunity for increased tourism
- Potential for increased community interaction
- Potential for increased events in the park
- Challenge of financial constraints
- Will be tough to replace an entire staircase and other things
- Might be tough to get permission from the city of Northville

Ford Field

# Ford Field Task Force

## Design Inspiration Concepts

### Inspiration



Park Pavilions for Seating/Eating



Splash Pad (summer) Ice Rink (winter)



New Updated Play Structure for Kids



Sidewalk Lighting

### Inspiration



### Inspiration



Chicago amphitheater gave us the idea of the outdoor amphitheater in the middle of the field to allow for concerts and other attractions



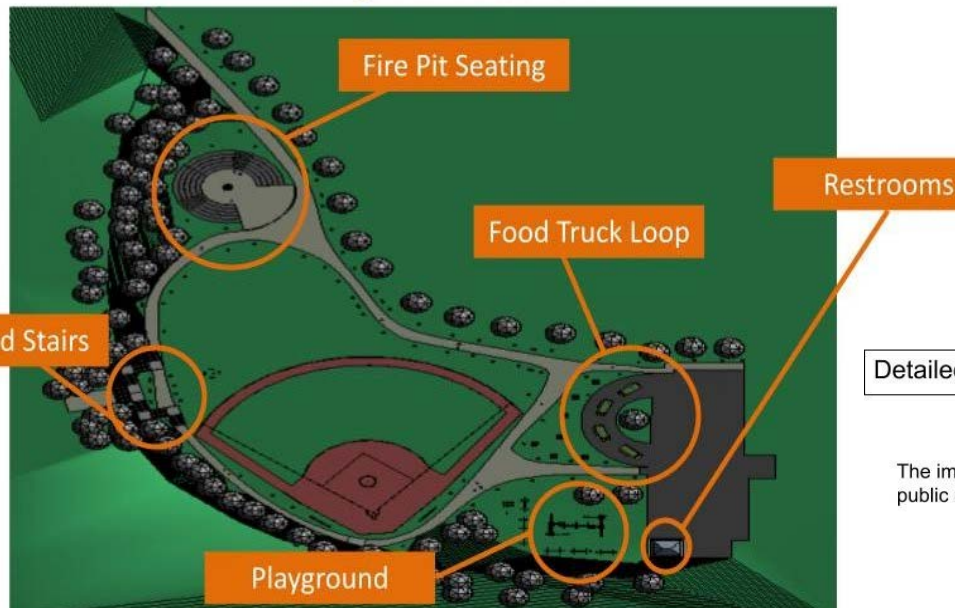
The stretford wall gave us the idea for a wall of rotating art pieces submitted by the NHS students and other artists in the near by area



# Ford Field Task Force

## Design Proposals

Project Overview

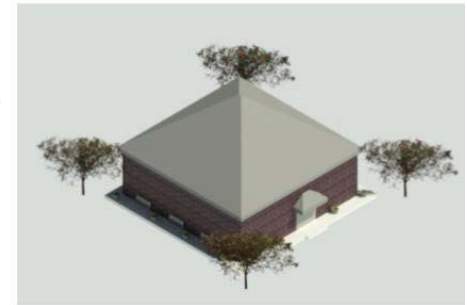


Food Truck Loop

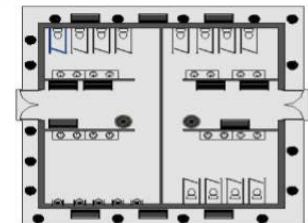


Detailed Images

The images to the right are of the public restroom.



The image to the right is a general lay out.



# Ford Field Task Force

## Design Proposals

### Detailed Images

### Main Entrance- Jonathan

- Big entrance to attract people to the park.
- At night "Ford Field Park" will glow.



### Detailed Images

### New Updated Play Structure and Drinking Fountains



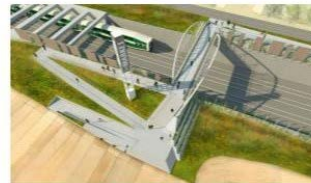
Ford Field Park Renovation

### Detailed Images



Footbridge over Griswold (couldn't put into assembly due to technical difficulties)

- Guarantee pedestrian safety while crossing the street
- Elevators/Stairs



Inspiration



### Detailed Images





# Ford Field Task Force

## Design Proposals

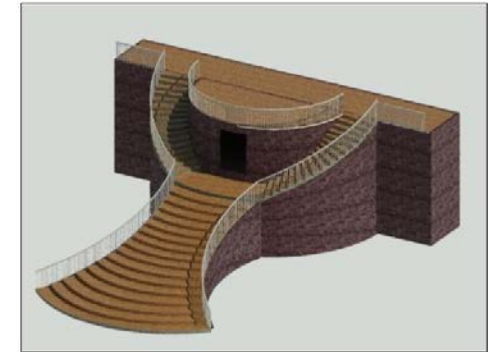
### Updated Stairs



### Detailed Images

- More modern and safer than the one currently in the park.
- Located in the back side of the park from Hutton St.

### Main Stairs- Jonathan



The broad staircase opens up Ford Field Park to the downtown area. The larger risers and runners in the middle of the staircase provide place for pedestrians to sit and children to play. The runners of the middle staircase are made of grass.



# Ford Field Task Force

## Design Proposals

### PAVILION DETAILS



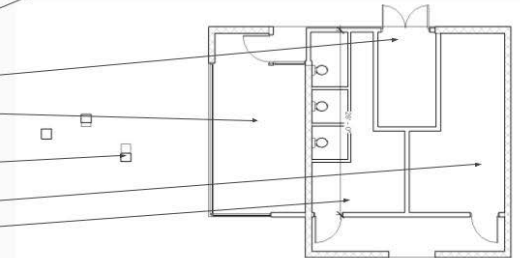
North-east view of the pavilion

### PAVILION DETAILS

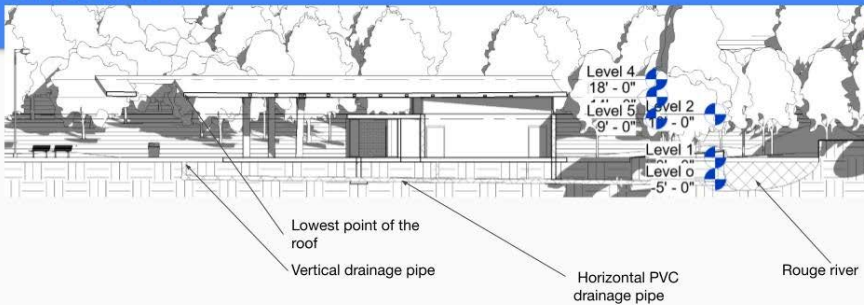
The pavilion is placed at the center of the park. The roofed area provides space for spectators of baseball games to sit. The west facade will be covered with a green wall.



- Space for green wall
- Storage room for lawn care
- Flexible space - ice cream shop
- Load bearing columns to the overhanging roof
- Men's restroom
- Women's restroom



### DRAINAGE CONSIDERATION AROUND PAVILION



Section of Pavilion facing north-west



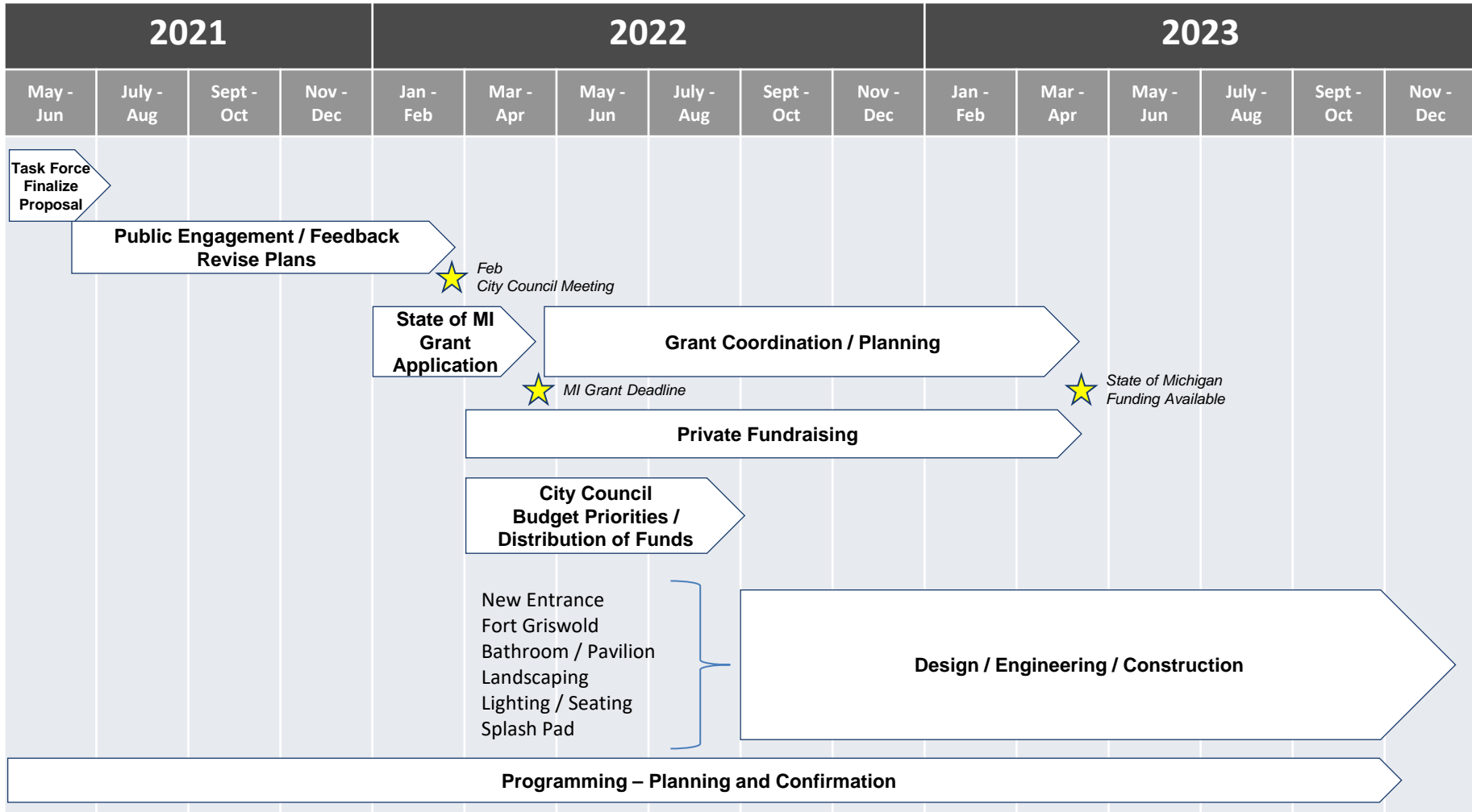
Bird's eye view - East.

## Implementation

John Carter



# Ford Field Task Force



# Ford Field Task Force

## Priority Summary



## Appendix



# Ford Field Task Force

## **Task Force Direction**

The Task Force directed our efforts toward the continued use of Ford Field as a park and athletic field utilizing the current basic layout.

The ideas and enhancements in this slide presentation promote expanded multiple use opportunities for the entire community to enjoy.

# Ford Field Task Force

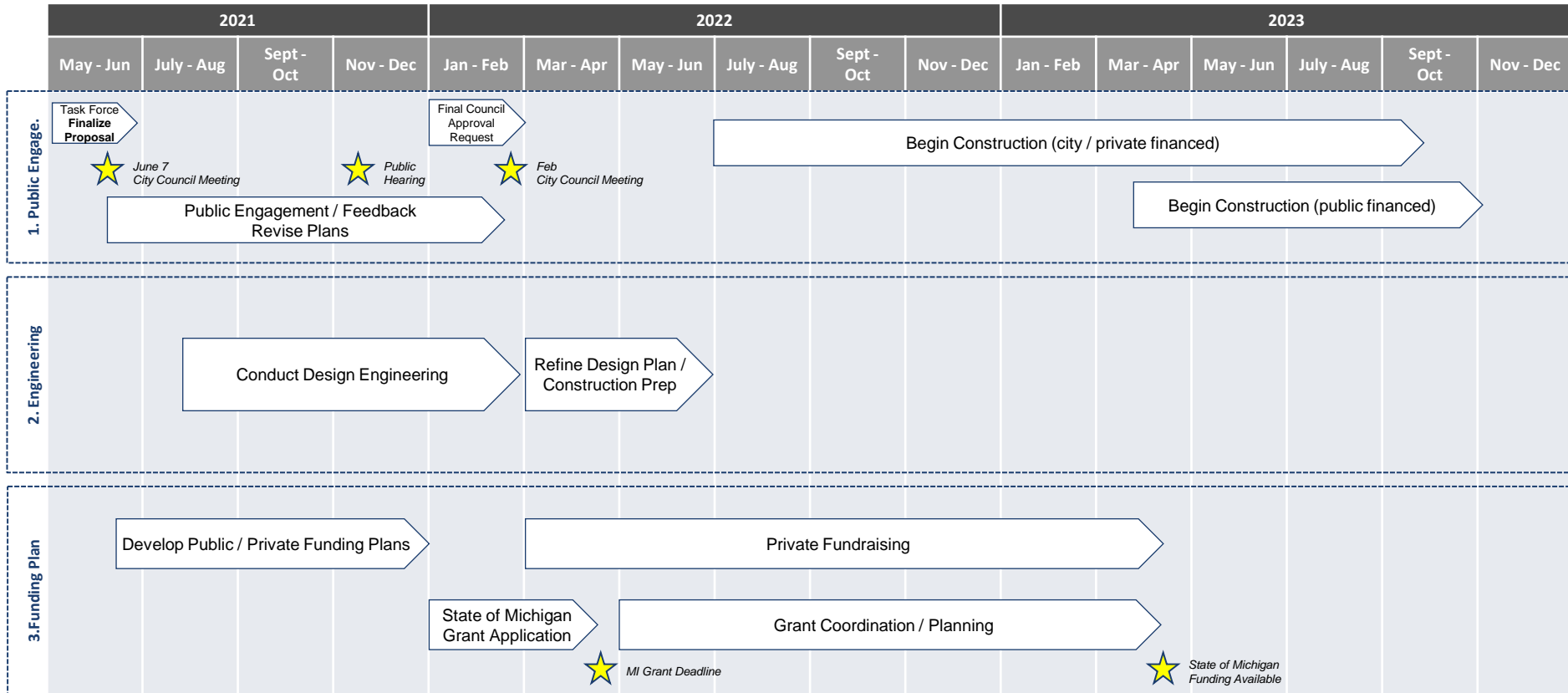
## **Environmental Consideration**

The Task Force has been mindful of the challenges that interface between land and water.

1. Ford Field drainage may need to be addressed to allow for effective and reliable planning usage.
2. Hillside and riverbanks must maintain structural integrity with any park changes.

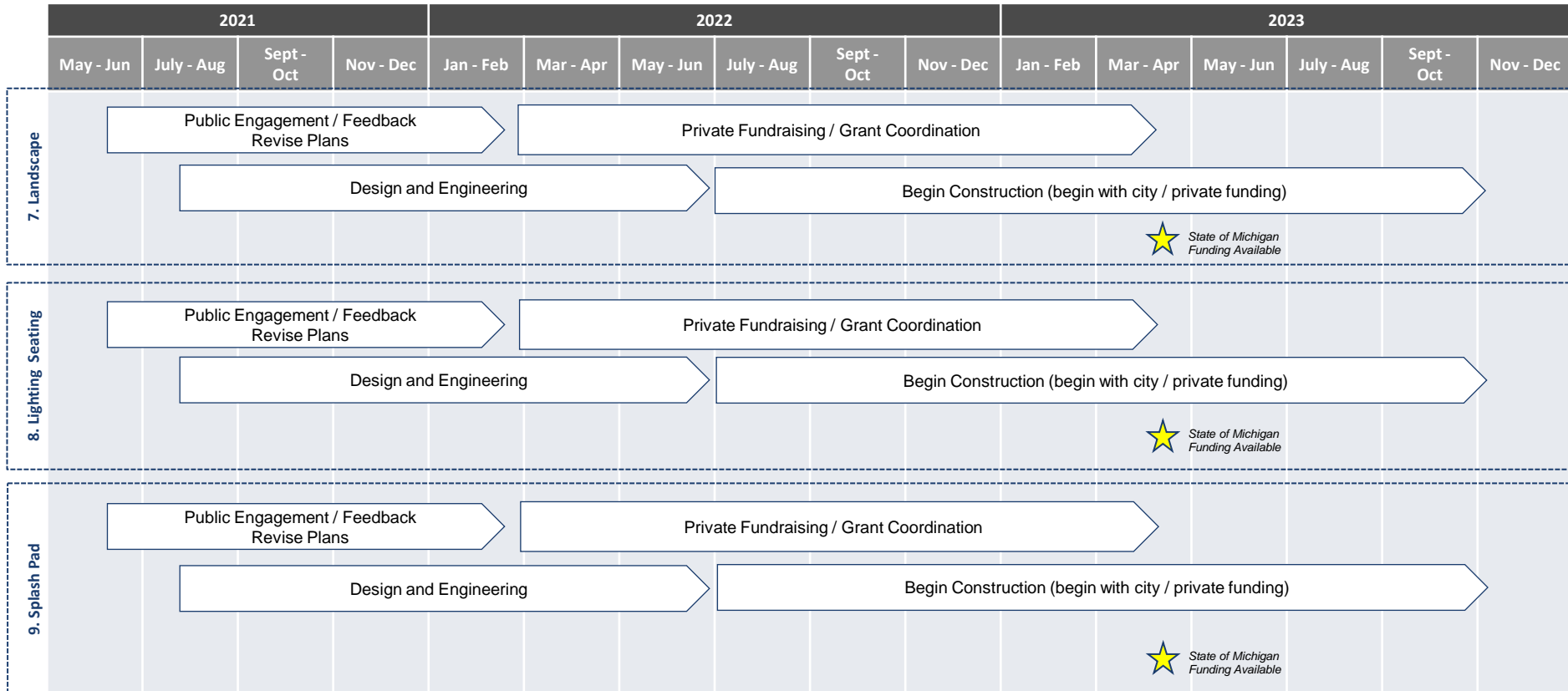


# Ford Field Task Force





# Ford Field Task Force



# Ford Field Task Force

2021				2022						2023					
May - Jun	July - Aug	Sept - Oct	Nov - Dec	Jan - Feb	Mar - Apr	May - Jun	July - Aug	Sept - Oct	Nov - Dec	Jan - Feb	Mar - Apr	May - Jun	July - Aug	Sept - Oct	Nov - Dec
10. Programming	<div>Task Force Finalize Proposal</div>														
	Confirmation and Planning														
11. To be determined															
12. To be determined															